

# ***Treyco Model 3000 Instruction Manual***



# TABLE OF CONTENTS

Safety and Unpack Machine	2
Features of Model 3000	3
Assembly	6
Charge honing disc	7
Sharpening A-5 Style Clipper Blades	9
Blade Charts	14
Honing Disc Replacement	15

# SAFETY PRECAUTIONS

- Wear safety glasses and dust mask when operating Treyco Model 3000.
- Do not operate machine with loose fitting clothing that can catch in moving parts.
- Keep hair pulled back to avoid contact with moving parts.
- Do not modify speed of machine.
- Use only TREYCO replacement parts and honing disc resurfacing.
- Keep work area clean.
- Keep children and visitors away from machine while in use.
- Do not operate machine until instruction manual is fully read and understood.
- Read Material Safety Data Sheets

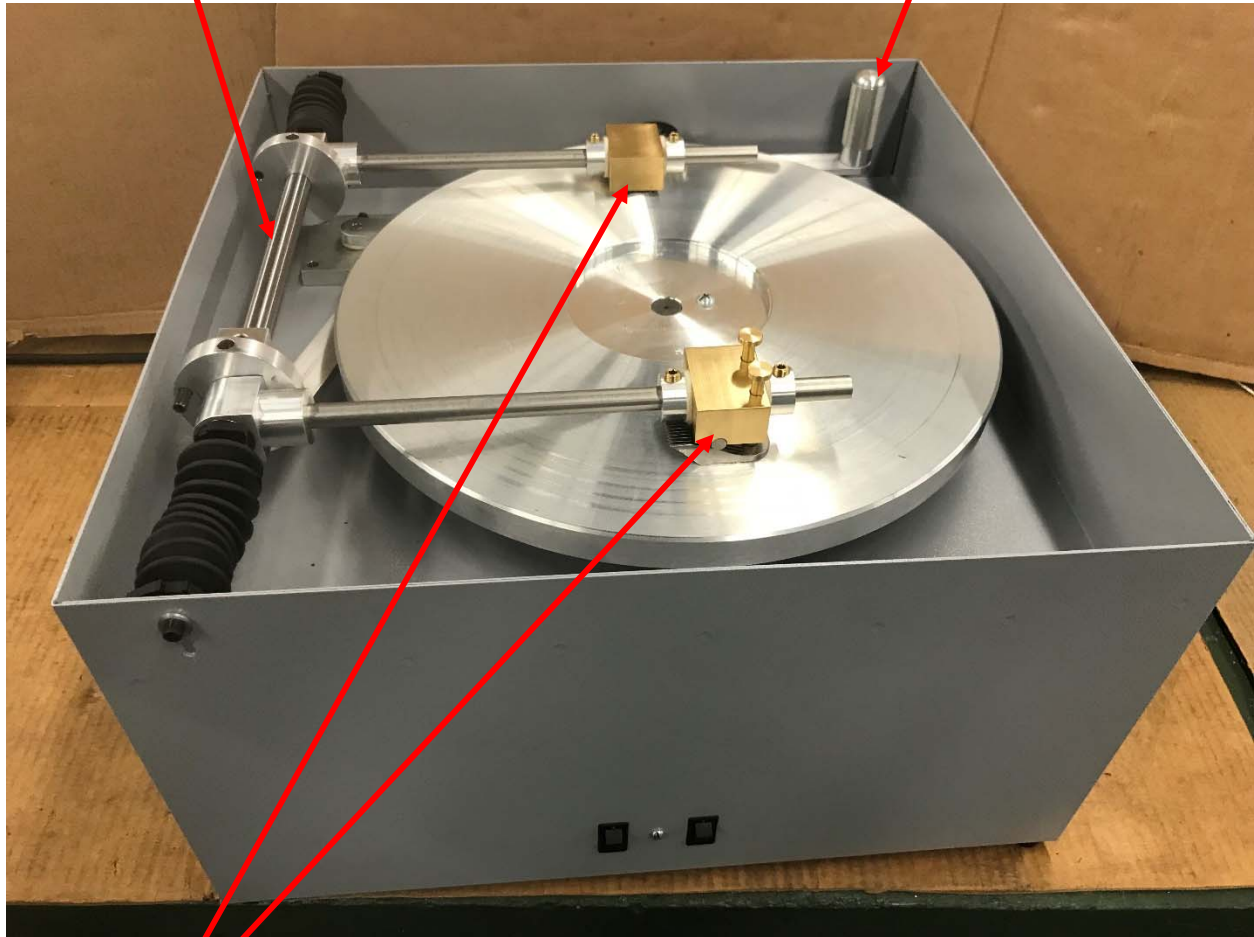
# UNPACK MACHINE

- Machine is shipped in three cartons as follows:
- One large carton contains assembled machine.
- Second carton contains honing disc.
- Third carton contains loosely packed accessories as follows:
- 1# jar honing powder
- Powder dispenser (salt shaker)
- Atomizer sprayer with oil
- Wood charging stick
- Metal removal gauge
- Instructional DVD
- Instruction manual
- Allen wrench 5/32
- Rabbit pelt

# FEATURES OF MODEL 3000

Linear ball bushing slide completely sealed with rubber bellows

Brake for quick stopping of honing disc



Magnetic holders that require no adjustments when sharpening various size blades

# TWO SPEED HONING DISC

Model 3000 is equipped with a 2-speed drive, machine arrives set on low speed.

To change to high speed move orange belt from upper pulley groove on drive plate to lower pulley groove then move belt from upper pulley groove on motor to lower.

To return to low speed reverse above directions.



Low speed setting



High speed setting

# HONING DISC BRAKE

Machine features a brake for stopping the honing disc quickly, the brake pad that presses on the outer edge of the disc will wear and when this happens remove the screw on top of pad and lift pad off and index to a different keyway and reattach with screw.



Brake pad with 4 keyways

# ASSEMBLY

Machine is received fully assembled with the exception of mounting the honing disc and preparation of the disc for sharpening as follows:

## STEP 1:

Place machine on sturdy table or bench.

## STEP 2: WASH HONING DISC

Wash both sides of honing disc with warm water and mild dish washing detergent (suggest Dawn Dish soap, DO NOT use detergent for automatic dishwashers).

Scrub disc with soap solution and soft bristle brush.

Rinse in warm water.

Let disc air dry only, DO NOT dry with towel as this will leave lint or fabric on disc.

## STEP 3: DISC IDENTIFICATION

Disc is double sided, and stamped in center recess for identification.

“H” side (HOLLOW GROUND) is used for small animal and human hair.

“F” side (FLAT GROUND) is used for large animal blades.

## STEP 4: INSTALL HONING DISC

Remove ¼” screw from drive plate and install honing disc onto machine by placing large center hole in disc onto spindle while aligning the threaded hole in drive plate with small hole in honing disc.

Insert ¼” screw through small hole in honing disc and tighten.

Cover large center hole in disc with a piece of adhesive (duct) tape to prevent honing powder from getting onto spindle.



Place tape over end of spindle shaft

Attach disc to spindle with supplied screw

# CHARGING HONING DISC

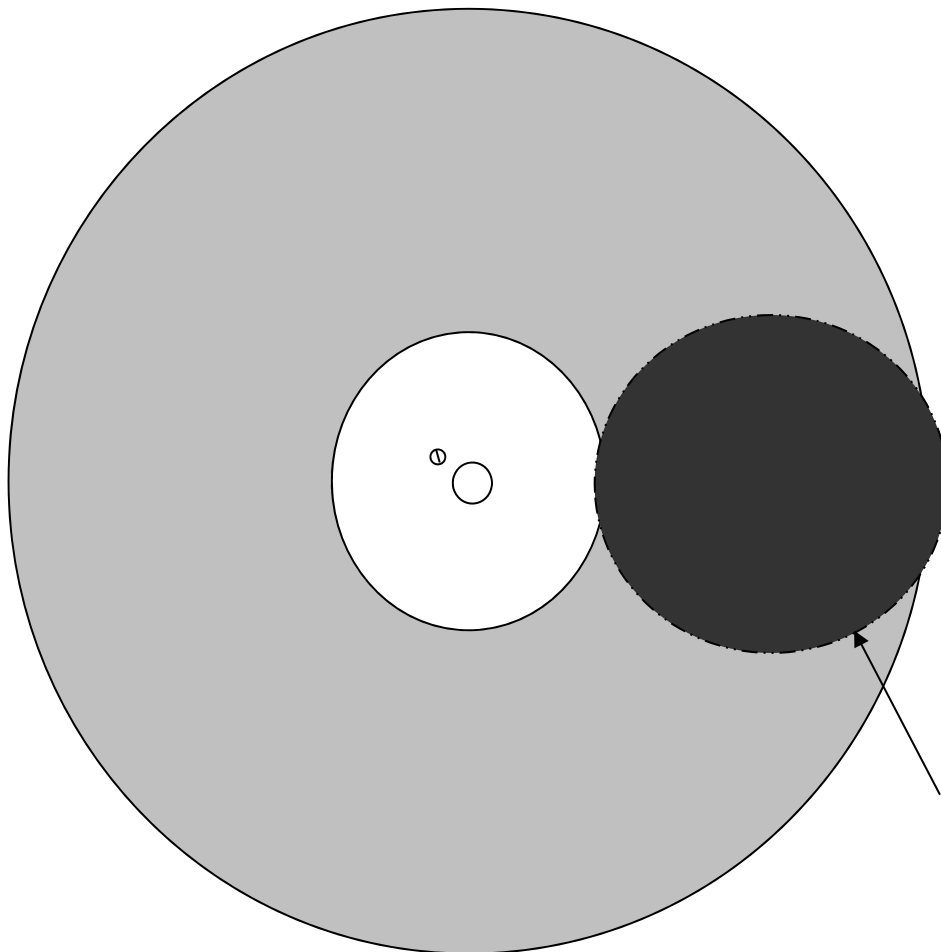
## STEP 1

Atomizer spray bottle comes already filled with honing oil, you must pressurize the bottle with air. This can be done the same as filling a car tire with air or use a bicycle tire pump. Fill to 50 – 90 pounds air pressure.  
Add honing powder into supplied powder dispenser (salt shaker).

## STEP 2

Before using a new or resurfaced honing disc you must first do an initial charging of honing oil and honing powder. Machine is shipped on low speed setting please leave it on low speed for the initial charging.

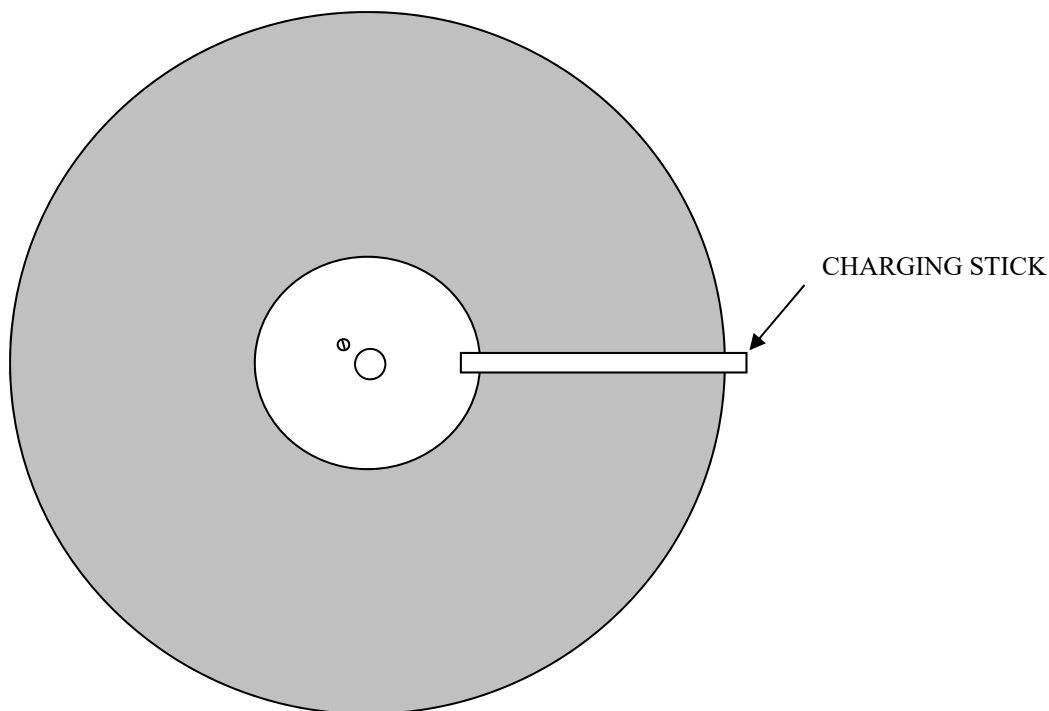
1. Spin honing disc by hand.
2. Hold atomizer 8 to 10 inches above disc.
3. Apply a fine spray of honing oil on disc by a 1-2 second burst from atomizer, honing oil should fall on honing disc as shown below as disc is slowly revolving.



Fine mist of oil to fall on disc in this area as disc spins slowly.



4. Apply honing powder evenly on disc with supplied shaker covering the disc lightly (approximately 1-2 teaspoons).
5. Place wooden charging stick on honing disc in line with center of disc and narrow edge of stick on honing disc. Make two revolutions around honing disc with charging stick to evenly distribute honing powder. Apply light down pressure on charging stick. This will fill the fine grooves on disc with powder.



6. Mount Oster comb blade size 10 or 15 on holder engraved OSTER COMB.
7. Turn on honing disc and automatic arms.
8. Lower comb blade only gently onto honing disc placing it down when blade is centered between outer edge and inner edge (do not set blade down at inner or outer edges of disc).
9. Let blade make 4-6 complete strokes across disc.
10. Lift blade to upright position.
11. Repeat this process FIVE more times.
12. After repeating this process, the entire surface of disc should be a uniform dull gray in color.

# SHARPENING A-5 BLADES

## STEP 1: SET METAL REMOVAL GAUGE

1. Disassemble blade set and wipe off any dirt, fur or hair.
2. Place side of comb blade to be sharpened on metal removal gauge with the 2 pins on gauge face entering the 2 screw holes on comb blade.
3. While holding comb tight to gauge rotate dial of indicator so needle points to zero.



Pins the screw holes in comb blade fit on



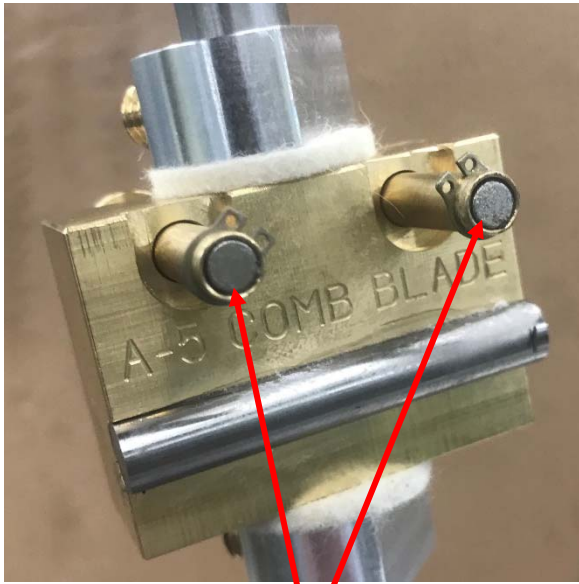
Hold comb blade tight to gauge and rotate dial to zero



After sharpening needle should be 2 lines from zero

## STEP 2: MOUNT COMB BLADE ON HOLDER

1. Place comb blade on holder labeled A-5 COMB BLADE with the 2 floating magnets in the counterbores that the blade screws go into. Teeth of blade should be pointing down.
2. With disc OFF (not rotating) lower comb blade to honing disc. Visually check that both teeth and wear bar are sitting on disc surface.
3. Lift arm to vertical position



Floating magnets



Counterbores that floating magnets fit into



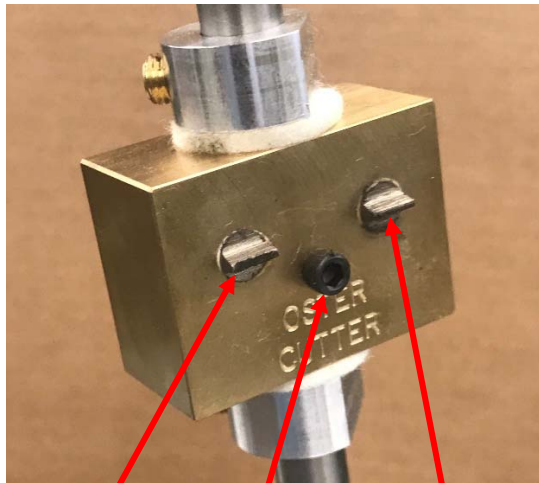
Comb blade mounted on holder



Teeth and wear bar sitting on disc

### STEP 3: MOUNT CUTTER BLADE

1. Place cutter on holder labelled OSTER CUTTER by having the 2 formed magnets fit into the groove that the blade guide rides and the screw head on holder fits into cutout in cutter where the lever fits that drives cutter back and forth when mounted to clipper motor.
2. With disc OFF (not rotating) lower cutter blade to honing disc. Visually check that both teeth and wear bar are sitting on disc surface.
3. Lift arm to vertical position.



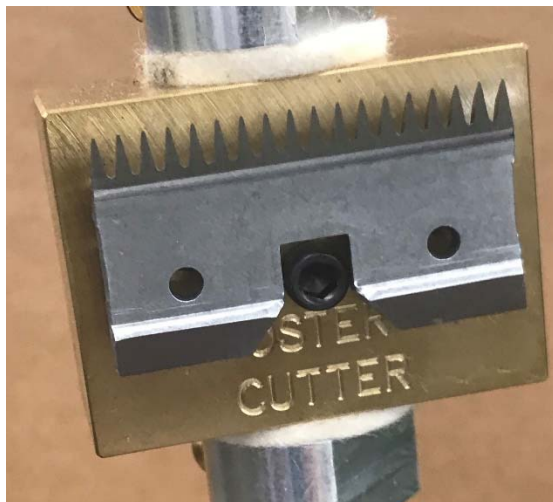
Screw head

Formed magnets

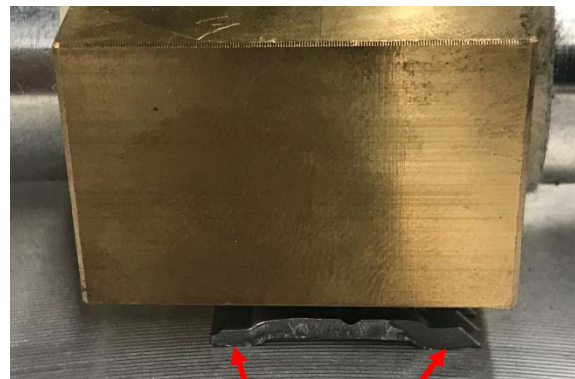
Blade guide groove



Cutout for lever



Cutter mounted on holder



Teeth and rear wear bar both sitting on disc

#### **STEP 4: APPLY OIL AND POWDER**

This process is similar to charging the disc.

1. Spin disc by hand.
2. Hold atomizer 8-10 inches above disc.
3. Apply a 1 – 2 second burst of oil from atomizer as disc rotates
4. Apply honing powder evenly around disc with the supplied shaker.
5. Place wooden charging stick on disc and make 2-3 revolutions around disc spreading powder and filling the fine grooves on the disc.
6. This is to be done with each blade sharpened.

#### **STEP 5: SHARPEN BLADES**

1. Turn on disc and automatic arms.
2. Lower comb onto disc setting down between inner and outer edges of disc.
3. Lower cutter onto disc setting down between inner and outer edges of disc.
4. Cycle for 2 minutes on low speed (reduce cycle to 1 minute if disc is set to high speed).
5. Lift arms off disc when holders are between inner and outer edges of disc.
6. Inspect powder residue on blades, powder should be moist enough to adhere to blades, if powder is dry like sand or flour then you are not using enough oil, if powder is wet like grease or toothpaste then you are using too much oil. If powder is too wet simply apply powder only (no oil) until powder residue is correct.
7. Wash blades in blade wash, mineral spirits or kerosene to remove all powder from blades. We recommend 2 containers the first container is what the blade is washed in and the second container is for rinsing the blade. Recommend using small paint brush to clean between the teeth of blade.
8. Place comb back on metal removal gauge and measure amount of metal removed in sharpening process. Needle should be 2 lines from zero indicating you removed .002" from blade.

## STEP 6: REASSEMBLE BLADE

1. Tighten spring tension if needed by squeezing spring where shaped like horseshoe with pliers closing the opening of the horseshoe slightly, do not close so much that socket cannot slide back into spring, if you have overtightened bend horseshoe open with flat blade screwdriver.
2. Assemble spring and socket together and attach to comb blade with 2 screws.
3. Align cutter to comb and examine tips of cutter teeth in relation to tips of comb teeth, cutter teeth should be slightly behind comb teeth so the sharp needle like tips of the cutter teeth are not protruding past the comb teeth as this could scratch or cut the surface of the animal or person the blade is being used on. (see chart)
4. Place blade on clipper motor and turn on, if blade rattles the ears of the socket must be squeezed closer together to eliminate rattle (this can be done without disassembling blade).
5. Test cut on rabbit pelt.



Tightening  
spring tension



Adjusting socket  
ears to stop  
blade rattle



Cutter set back

## A-5 BLADE CHART

Blade Size	Cutter Set Back
7 and larger	1/16
8 ½ thru 30	1/32
40 and finer	1/64

## OSTER 10, 11, and 111 BARBER BLADES

## ANDIS BG BLADES

Blade Size	Cutter Set Back
0000 and 00000	1/64
000 thru 0	1/32
0A thru 18	1/16

# HONING DISC REPLACEMENT

When a new or resurfaced honing disc is installed on machine the following adjustments must be verified before machine can be used (this is not required if turning disc over to use other side). This is due to variations in thickness of honing discs.

## **Adjustment of arms parallel to honing disc**

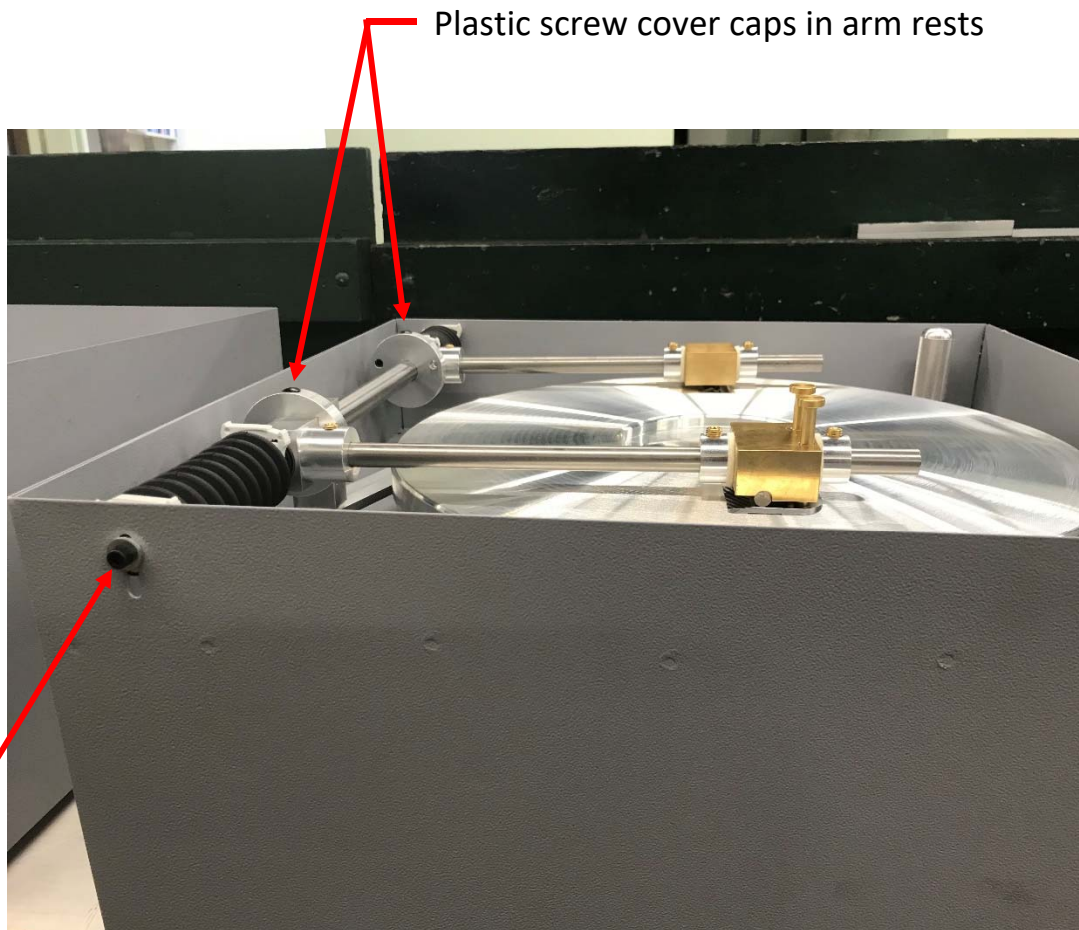
The cutter and comb holder arms must be set parallel to the surface of the honing disc that is on machine (thickness of honing disc changes when resurfaced).

Mount size 10 or 15 comb blade on holder.

Mount cutter on cutter holder.

With disc turned off lower arms to surface of honing disc.

Loosen screws on side of machine this will allow you to raise or lower automatic assembly and set arms parallel to honing disc.



Plastic screw cover caps in arm rests

Screw for adjusting arms parallel with honing disc, one on each side of machine



## **CENTER HOLDERS**

Raise arms to vertical position.

Mount an A-5 comb blade size 10 or 15 on Comb Holder.

Lower arm so comb blade is resting on top of honing disc.

Turn on automatic arms (switch on left) and observe if the comb blade overlaps the inner and outer edge of honing disc the same amount at each end of its stroke.

If not, turn off automatic arms.

Remove plastic cover from screw hole on top of arm rest and loosen set screw.

Move pivot block assembly left or right on slide rod bearing housing so teeth of cutter overlap same on inner and outer edge of disc.

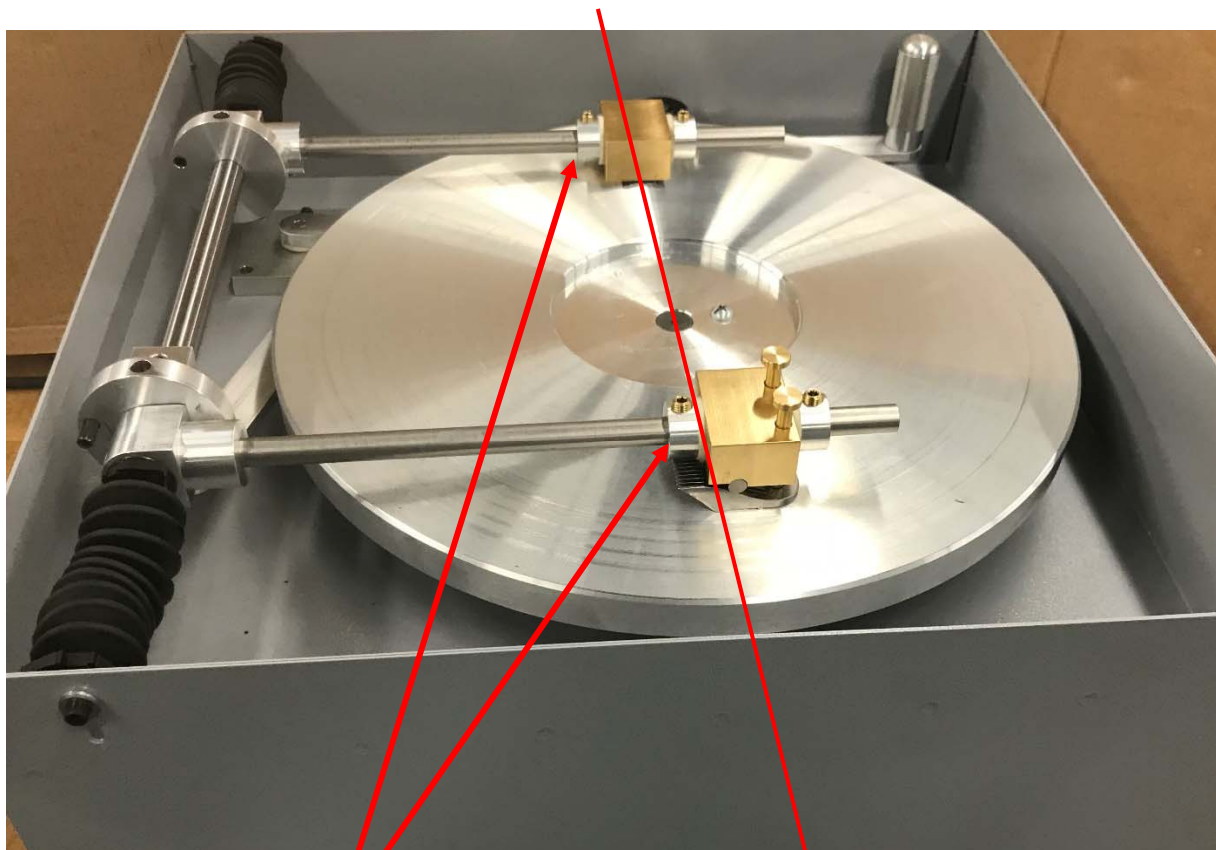
Verify by turning on arm motor, replace plastic cover in screw hole cover.

Repeat above step until comb overlaps inner and outer edges of honing disc equally.

Repeat process on cutter blade holder.

## **ADJUSTMENT OF HOLDERS TO CENTERLINE OF DISC**

Loosen set screw collars on arms and slide holders on arms so the teeth of the cutter and comb are in line with centerline of honing disc.



Set screw collars

Centerline of honing disc